

Technical description

Crawler loader

LR 632
Litronic®

Engine output 132 kW/180 HP

Operating weight 21.0 - 21.8 t / 46,300 - 48,000 lb

Bucket capacity 1.9 - 2.4 m³ / 2.49 - 3.14 cu.yd.

Hydrostatic travel drive with electronic control



LIEBHERR

The Better Machine.



Diesel Engine

Liebherr-Diesel Engine	D 926 T-E
Rating per DIN/ISO 3046	132 kW (180 HP) at 1800 RPM
Displacement	10,0 l (610 cu.in)
Bore/stroke	122 mm/142 mm (4.8/5.6 in)
Design	6 cylinder in-line engine, water-cooled, turbocharged
Injection	direct fuel injection with in-line injection pump, mechanical governor
Fuel filter	pre-cleaner with water separator and micro filters
Lubrication	pressurized lube system with full flow filter and integrated oil cooler, deep oil pan for inclinations, engine lubrication to an inclination of up to 45° to each side
Operating voltage	24 V
Alternator	55 Amp.
Starter	6,6 kW (7.3 HP)



Travel Drive

Design	closed-loop hydrostatic drive, each track is driven by one variable flow swash plate-type pump and one variable displacement motor
Pump flow	max. 209 l/min (55 gpm)
Max. pressure	adjusted to 420 bar (6090 PSI)
Travel speed	0 - 11 km/h (0 - 6.8 mph) infinitely variable, forward and reverse
Steering	hydrostatic
Service brake	hydrostatic
Parking/emergency brake	automatic multi disc brake in final drives
Cooling system	hydraulic oil cooler with separate cooling circuit with gear pump and front mounted cooler
Filter system	cartridge micro filters in the cooling circuit



Final Drive

Concept	2-stage planetary reduction gear with hydraulic travel motor directly flanged to travel gear
Design	compact unit, protected and integrated into the track roller frame



Track Frame

Design	maintenance-free tractor-type track frames
Mount	elastic components at the pivot shaft and the oscillating equalizer bar
Chains	lubricated, track chain tension via grease tensioner cylinders, double or triple grouser pads
Chain links	39
Track rollers	6
Carrier rollers	1



Attachments

Z-bar linkage	gives maximum breakout-force and optimum of working speed, the single tilt cylinder allows excellent view of the bucket
Buckets	standard and multi-purpose bucket are equipped with 8 replaceable teeth
Cycle times	lifting 6,5 seconds lowering 2,1 seconds tilting out 1,5 seconds



Travel Control

1 joystick lever	with electronic control for all travel functions: travel direction, speed, steering and counter-rotation
Speed range 1	0 - 5 km/h (0 - 3.1 mph)
Speed range 2	0 - 11 km/h (0 - 6.8 mph)
Electronic engine speed sensing control	electronic regulation assures a constant balance between travel speed and necessary drawbar pull through engine speed sensing avoiding engine overload
Straight line travel	electronically controlled
Parking/emergency brake	automatically applied after the joystick lever is put in neutral position
Safety lever	inactivates complete travel and working hydraulic circuit and automatically activates parking brake
Emergency shut off	push button on instrument panel immediately activates parking and emergency brake



Attachment Hydraulics

Hydraulic system	load sensing proportional pump flow control, variable flow swash plate piston pump and pressure compensation
Pump flow	max. 156 l/min (41 gpm)
Pressure limitation	max. 280 bar (4060 PSI)
Control valve	2 spool control block, can be expanded to 4 circuits
Filter system	return filter with magnetic rod in hydraulic tank
Control	single servo-assisted joystick lever for all bucket functions, electrical switches for lift stop, bucket positioning and bucket-float



Operator's Compartment

Cab	resiliently mounted, with integrated ROPS (Roll Over Protective Structure, ISO 3471) and FOPS (Falling Objects Protective Structure, ISO 3449), can be tilted with hand pump to the rear for accessibility to machine components, all around safety glass
Operator's seat	fully adjustable, suspended seat, adjustable to operator weight
Instrument panel	comprehensive instrument panel on the right side of the operator's seat
Ventilation	pressurized filtered air ventilation, 2 stage blower
Heater	hot water heater

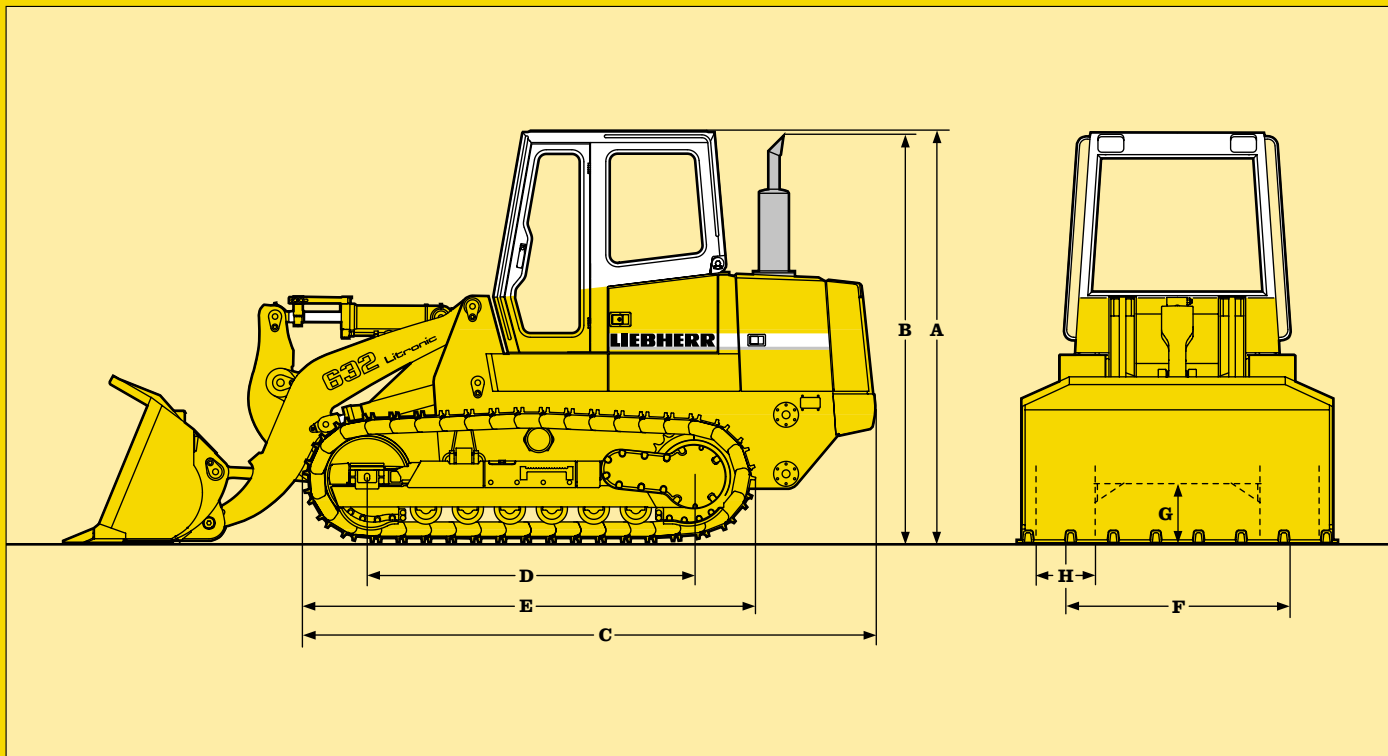


Refill Capacities

Fuel tank	320 l (84.5 gal)
Cooling system	59 l (15.6 gal)
Engine oil	23 l (6.1 gal)
Splitterbox	3 l (0.8 gal)
Hydraulic tank	175 l (46.2 gal)
Final drive, each	18 l (4.8 gal)

Technical Data

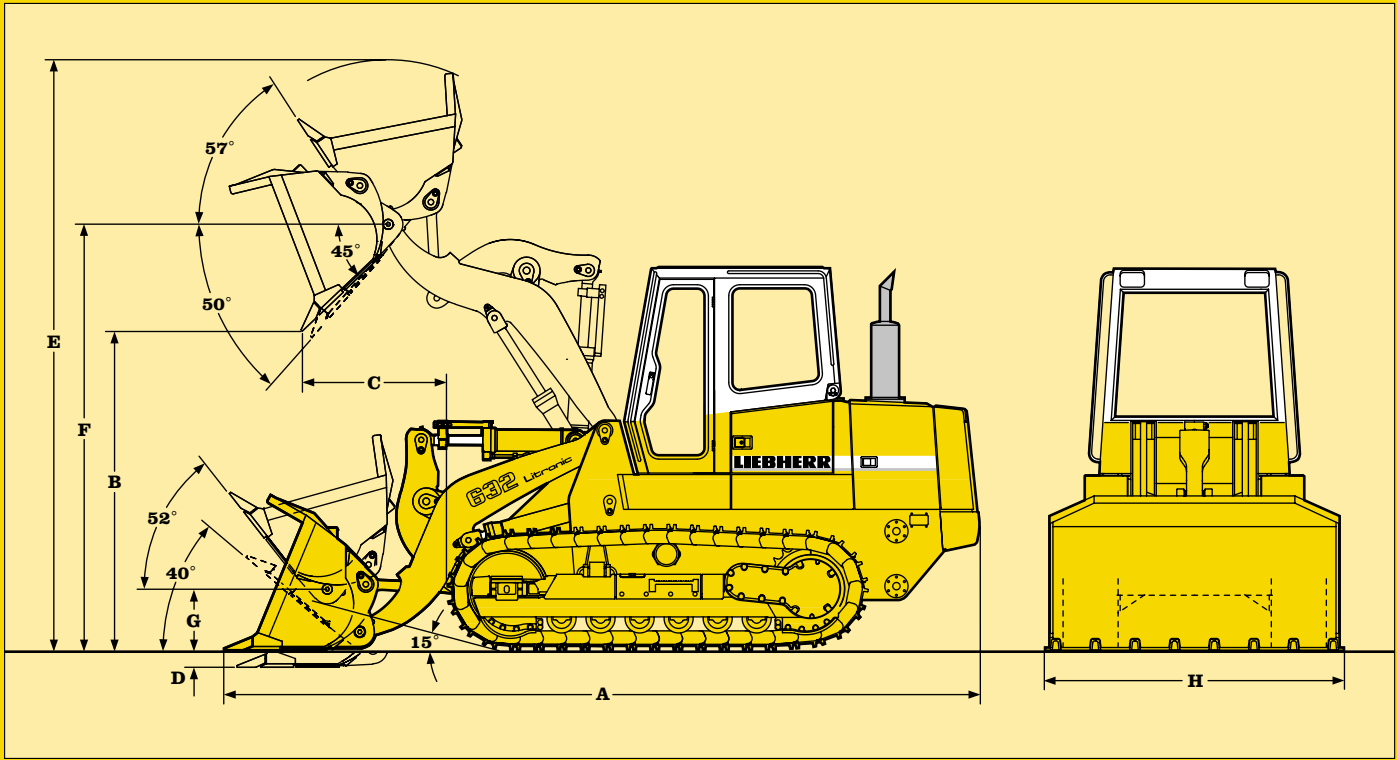
Basic Machine



	LR 632
Dimensions	mm/ft-in
A Height over cab	3304/10'10"
B Height over exhaust pipe	3186/10'5"
C Overall length without attachment	4801/15'9"
D Distance idler/sprocket center	2673/8'9"
E Crawler length	3690/12'1"
F Track gauge	1800/5'11"
G Ground clearance	426/1'4"
H Width of trackpads	508/560/20"/22"
Ground contact area:	
trackpad-width 508 mm/20"	2,72 m ² /4,200 sq.in
560 mm/22"	2,99 m ² /4,630 sq.in

Dimensions

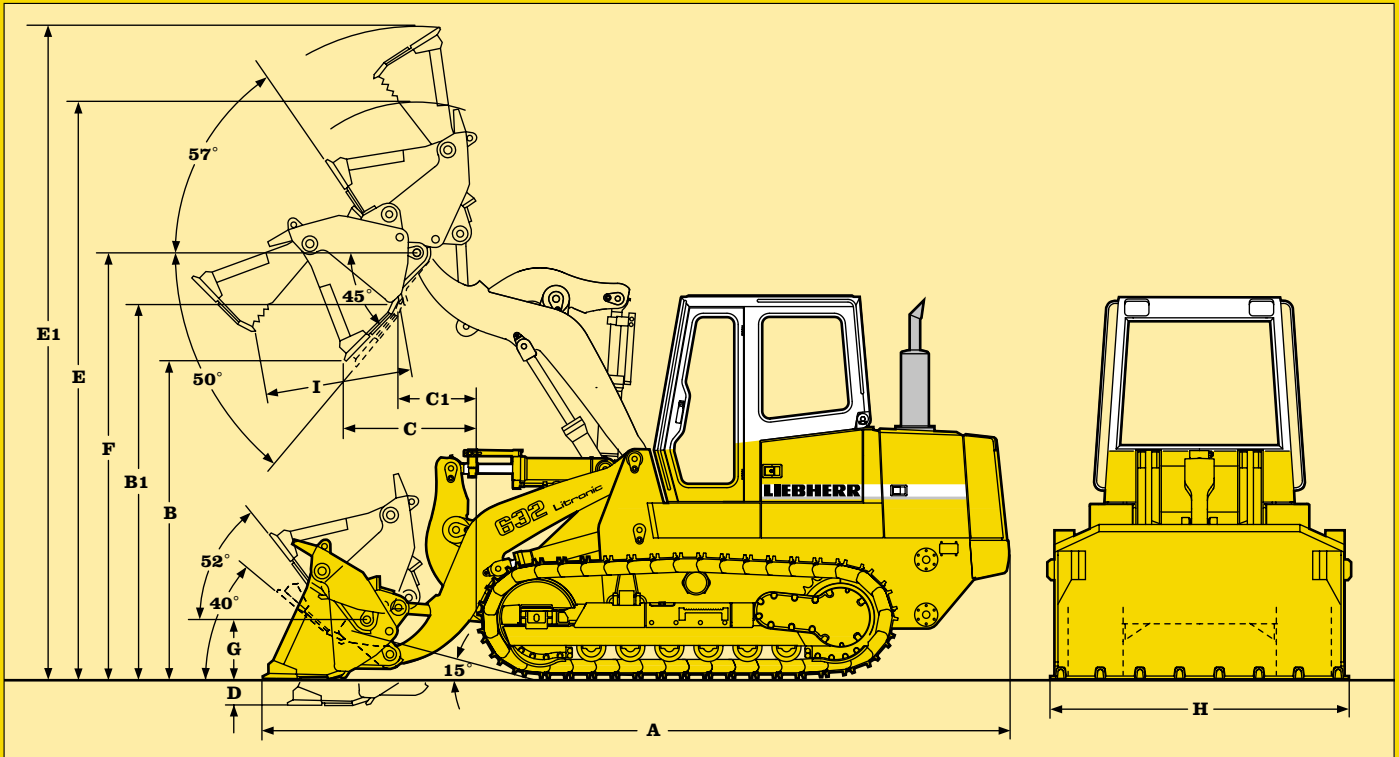
Standard Bucket



	LR 632	LR 632
	version with weld on teeth	version with bolt on teeth and segments
Capacity heaped (ISO 7546)	2,3 m ³ /3.01 cu.yd	2,4 m ³ /3.14 cu.yd
Breakout force	177 kN/39,777 lb	165 kN/37,080 lb
Static tipping load	13895 kg/30,638 lb	13795 kg/30,418 lb
Dimensions	mm/ft-in	mm/ft-in
A Overall length	6747/22'2"	6832/22'5"
B Dumping height at 45°	3149/10'4"	3085/10'1"
C Reach at 45°	1170/3'10"	1192/3'11"
D Max. digging depth below grade	120/4.7"	142/5.6"
E Overall height	5505/18'1"	5505/18'1"
F Max. height of hinge pin	4040/13'3"	4040/13'3"
G Height of hinge pin, transport position	573/1'11"	573/1'11"
H Width of bucket	2500/8'2"	2500/8'2"
Operating Weights	kg/lb	kg/lb
Standard bucket	1454/3,205	1554/3,426
Basic machine with standard bucket and double-grouser trackpads 508 mm/20"	21000/46,305	21100/46,526
double-grouser trackpads 560 mm/22"	21140/46,614	21240/46,834
Ground Pressures	kg/cm²/PSI	kg/cm²/PSI
Basic machine with standard bucket and double-grouser trackpads 508 mm/20"	0,77/10.95	0,78/11.09
double-grouser trackpads 560 mm/22"	0,71/10.1	0,71/10.1

Standard Bucket

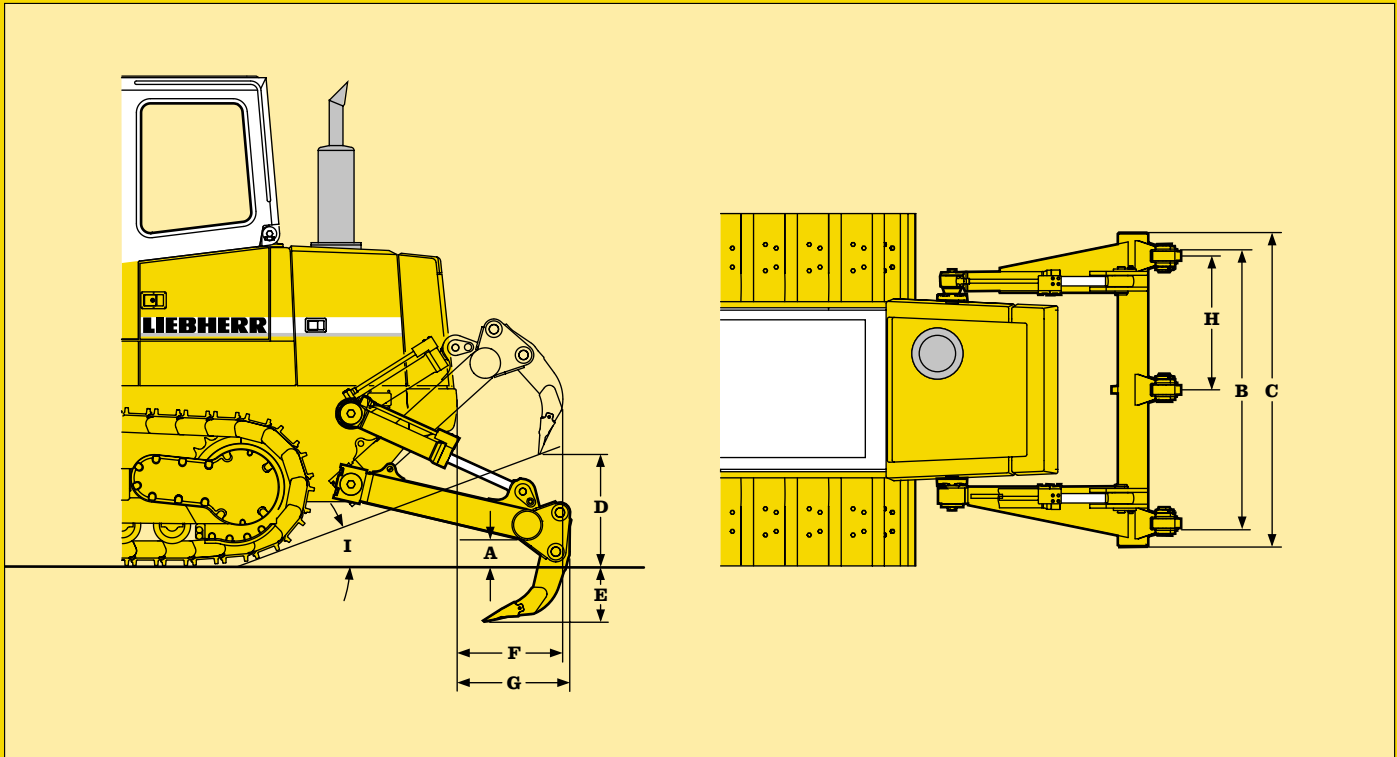
Multi-purpose Bucket



	LR 632 version with weld on teeth	LR 632 version with bolt on teeth and segments
Capacity heaped (ISO 7546) Breakout force Static tipping load Max. clamping force	1,9 m ³ /2.49 cu.yd 167 kN/37,530 lb 12660 kg/27,915 lb 100 kN/22,473 lb	2,0 m ³ /2.62 cu.yd 157 kN/35,283 lb 12555 kg/27,684 lb 100 kN/22,473 lb
Dimensions	mm/ft-in	mm/ft-in
A Overall length	6860/22'6"	6938/22'9"
B Dumping height at 45° (bucket)	3057/10'	2997/9'6"
B1 Dumping height at 45° (blade)	3574/11'9"	3574/11'9"
C Reach at 45° (bucket)	1151/3'9"	1180/3'10"
C1 Reach at 45° (blade)	656/2'2"	656/2'2"
D Max. digging depth below grade	190/7.5"	212/8.4"
E Overall height (bucket)	5424/17'10"	5424/17'10"
E1 Overall height (blade)	6044/19'10"	6044/19'10"
F Max. height of hinge pin	4040/13'3"	4040/13'3"
G Max. height of hinge pin, transport position	567/1'10"	567/1'10"
H Width of bucket	2500/8'2"	2500/8'2"
I Width of opening	1285/4'3"	1285/4'3"
Operating Weights	kg/lb	kg/lb
Multi-purpose bucket	2040/4,497	2140/4,718
Basic machine with multi-purpose bucket and double-grouser trackpads 508 mm/20"	21610/47,650	21710/47,871
double-grouser trackpads 560 mm/22"	21710/47,871	21810/48,091
Ground Pressures	kg/cm²/PSI	kg/cm²/PSI
Basic machine with multi-purpose bucket and double-grouser trackpads 508 mm/20"	0,79/11.38	0,80/11.38
double-grouser trackpads 560 mm/22"	0,73/10.38	0,73/10.38

Multi-purpose Bucket

Ripper



Radial ripper, 3 shank rigid-type
Ripper tips: ESCO

Dimensions

A Ground clearance below toolbar
B Ripping width
C Toolbar width
D Lifting height
E Ripping depth
F Extra length, attachment raised
G Extra length, attachment lowered
H Distance between teeth
I Angle

mm/ft-in

200/7.9"
1860/6'1"
2100/6'11"
771/2'6"
385/1'3"
660/2'2"
635/2'1"
900/2'11"
21°

Weight

Ripper complete

kg/lb

1070/2,359

Ripper

Standard Equipment *

Diesel Engine:

- Fuel system with pre-filter, water separator and fine filters
- Dry-type air cleaner with main and safety element
- Air filter with automatic dust ejector
- Alternator, 55 Amp
- Starter motor 6,6 kW (7.3 HP)
- Electrically activated battery master switch
- Two HD cold start batteries - 110 Ah
- Glow plug cold starting aid

Track Components:

- Maintenance-free track components, sealed and lubricated rollers, idlers and sprockets
- Segmented, bolt-on sprocket rims

Travel Drive:

- Hydrostatic drive with electronic control
- Automatic parking brake

Attachment Hydraulics:

- 2-spool control block
- Electrical switches for lift stop, bucket positioning and bucket-float
- Z-bar linkage

Operator's Compartment:

- Cab with integrated ROPS/FOPS, hot water heater, pressurized and filtered ventilation
- Fully adjustable suspension seat with seatbelt
- Windshield wipers front and rear
- Windshield washer system
- Dome light, rear view mirror, sun shade
- Safety glass, tinted glass
- Lockable doors
- Two front and two rear working lights
- Lighted instrument panel with engine oil pressure and engine coolant temperature gauge, hour meter and fuel gauge

Basic Machine:

- Tool kit
- Rear drawbar hitch

* Standard and optional equipment may vary.

Optional Equipment

- Perforated engine side covers
- Backup alarm
- Air conditioner
- Cab protection screens
- Power adjustable, air suspension seat
- Electric fuel pump
- Full length track guard
- Track guide, center
- Extra hydraulic controls
- Hydraulic winch
- Swinging drawbar
- Remote radio control
- Landfill package
- Forestry package
- Special paint, one or two tone
- Special buckets
- Lifting lugs

Other optional items on request

Standard and Optional Equipment

LIEBHERR-WERK TELFS GMBH, Postfach 49, A-6410 Telfs, ☎ (0 52 62) 6 00, Fax (0 52 62) 6 00 72

With compliments: